

DIANA FEIGELES

Interior Design Portfolio

- 1. Table of Contents**
- 2. Design Experience**
- 3. Commercial - Mood Board**
- 4. Commercial - Restaurant Furniture Selection**
- 5. Commercial - Office Design**
- 7. Commercial - Store Design & Art Direction**
- 9. Commercial - Custom Millwork & Furniture Design**
- 11. Residential - Mood Board**
- 12. Residential - Floor Plan**
- 13. Residential - Townhome Project**

DESIGN EXPERIENCE

SENIOR DESIGN PROJECT MANAGER

Whole Foods Market | May 2020 - May 2022

- Managed Project Architects through Schematic Design, Design Development, and Construction Documents
- Directed specification of paint, tile, equipment finishes & furniture for new stores, renovations & small projects
- Created mood boards for visual inspiration & store design look & feel
- Coordinated schedules & key deadlines with Architects, Engineers, Consultants, and Whole Foods Team
- Oversaw budgets for project design fees

DECOR & DESIGN PROJECT MANAGER

Whole Foods Market | May 2018 - April 2020

- Leads Decor Fabrication, Decor Installation, & Furniture for all new stores & renovations for Whole Food Market North East
- Managed Decor & Furniture budgets & timelines
- Reviews Construction fixture plans to identify Decor, Millwork & Lighting needs in collaboration with Leadership & Construction teams
- Manages Decor Deck review, partnering with Regional & Global teams to ensure Decor Decks meet Whole Foods standards
- Develops Decor Deck design development on select projects

CLIENT PROJECT MANAGER

Heartwork Inc. | March 2016 - April 2018

- Led Heartwork furniture shipments, installations, and White Glove deliveries
- Oversaw key accounts & large project orders from post-sale to delivery
- Developed & implements detailed timeline per project to track deliverables
- Managed finished goods inventory & partnerships with warehouses
- Tracked quality data to report to Executive, Engineering, & Supply Chain teams

INTERIOR DESIGN ASSISTANT

Markham Roberts Interior Design | April 2014 - October 2014

- Coordinated & assisted with on site installations
- Obtained & organized quotes, custom fabric orders, & POs for fabric, furniture, fixtures, & equipment

MATERIALS LIBRARIAN

Selldorf Architects | October 2012 - May 2013

- Oversaw organization & maintenance of extensive materials library
- Designed & produced furniture plans & 3D models
- Surveyed client apartments for architectural plans

DESIGN INTERN

Kara Mann Design | June 2012 - September 2012

- Assisted Project Management team in creating AutoCAD drawings & plans
- Sourced finishes & materials for Lead Designer's review

Additional Experience Available Upon Request



PENN GROCERY RENOVATION 2021 MOOD BOARD

This mood board was created as the first step in the design process, to inform the architectural & decorative design, that primarily focused on using paint and select tile to update the space.

The goal with the design for this renovation was to preserve as many existing elements and pieces of equipment as possible, while creating a fresh new look and color story.

The existing tile was a mix of off-white and pale yellow, with stainless steel equipment and wood cladding on many walls and soffits. A bright orange and hues of green and blue were added to modernize the paint. All wood was white washed to lend to a desired sophisticated country look.



MARKET COUNTER, PARSIPPANY NJ, 2019

Market Counter is an eat-in restaurant attached to a market, designed to serve rustic organic fare.

Market Counter is positioned near multiple office parks. The outdoor space was designed to invite workers to step away from their desks for lunch and enjoy some time outside.

All exterior furniture is commercial grade, waterproof, and made of 100% recycled materials.





**JERSEY CITY
CORPORATE OFFICE
2021**

This office design was meant to be fun, lively, and a careful mix of modern and rustic, true to the company's brand.

The design incorporated a mix of high end materials, with more purposeful industrial selection, and intentionally recycled pieces.



COMMERCIAL

6



COMMERCIAL

7

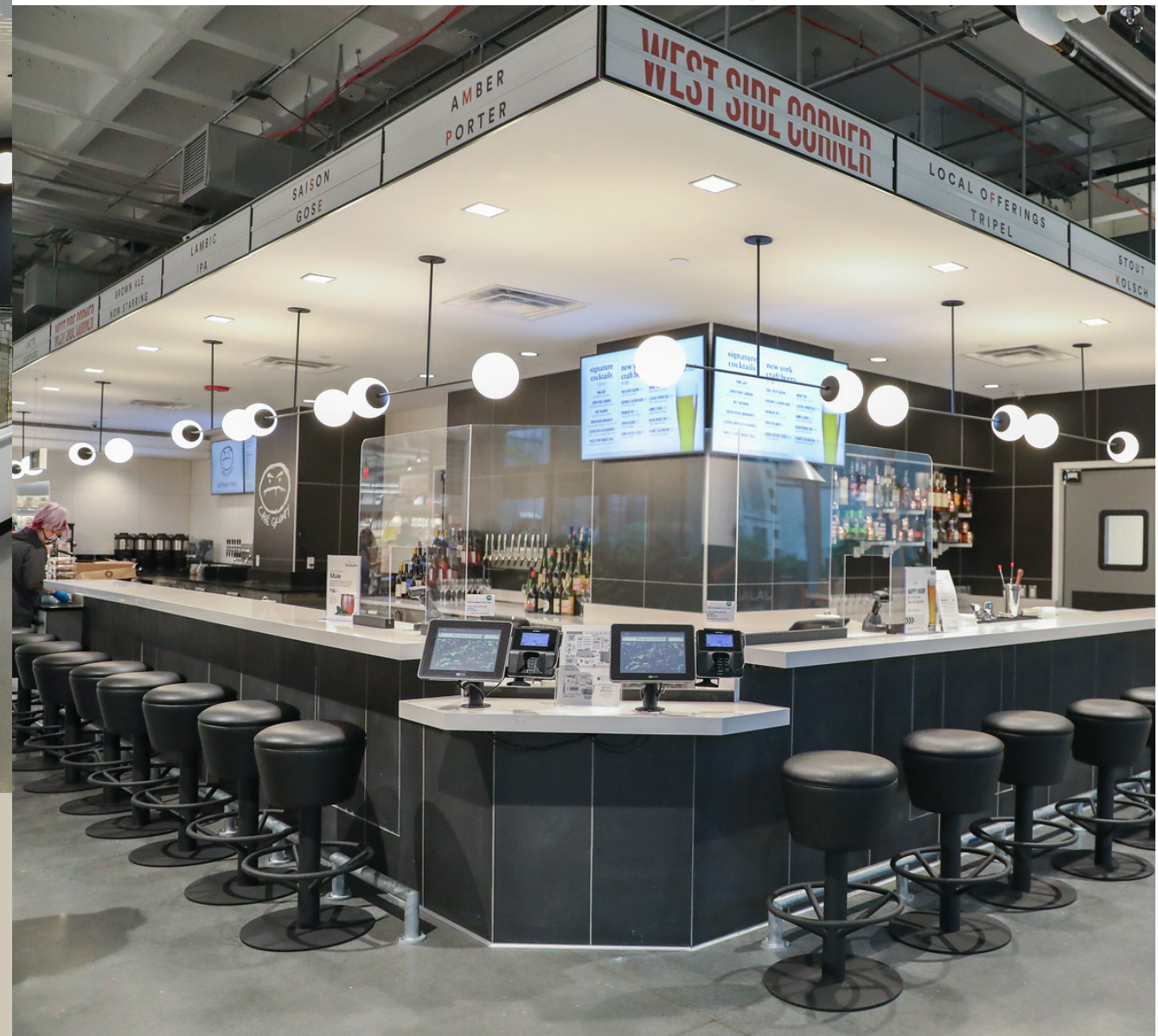


HUDSON YARDS, NY, GROCERY STORE, 2020

Cheese Display | Art Direction & Material Selection

HUDSON YARDS, NY, GROCERY STORE, 2020

Bar & Cafe | Art Direction & Furniture Selection



COMMERCIAL

TOWSON, MD, GROCERY STORE, 2020

Produce Signage | Decor Design & Finish Selection

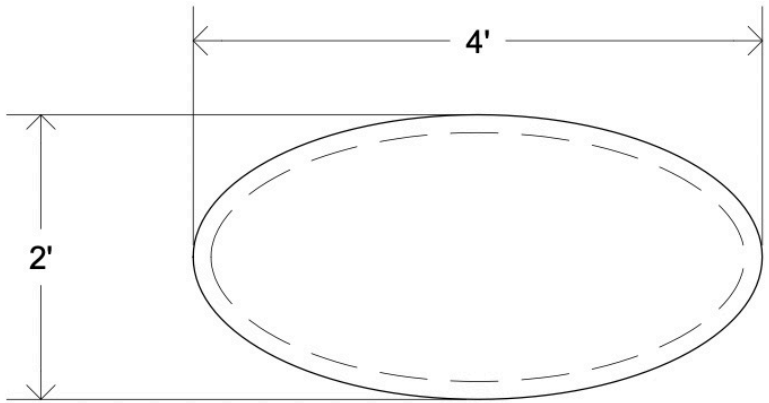


LONG ISLAND, NY, GROCERY STORE, 2020

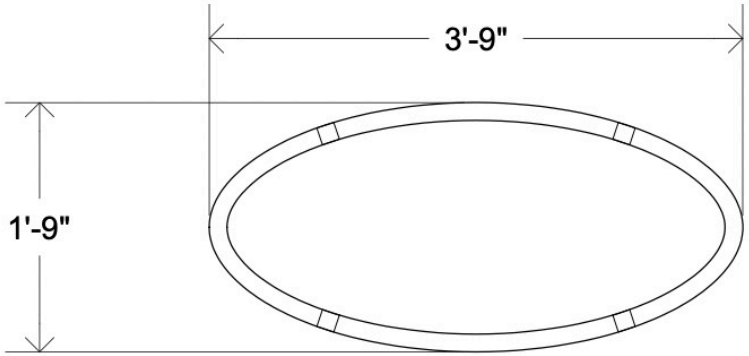
Coffee Counter | Decor Design & Finish Selection



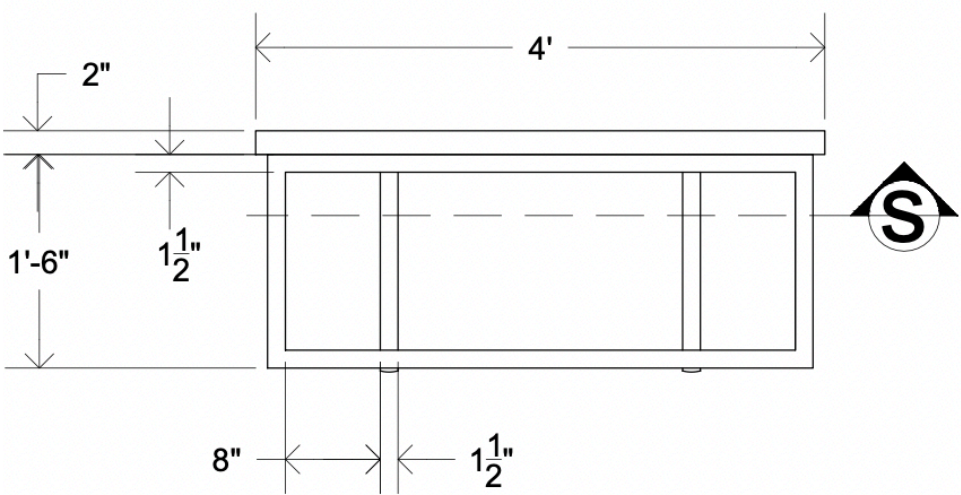
PLAN



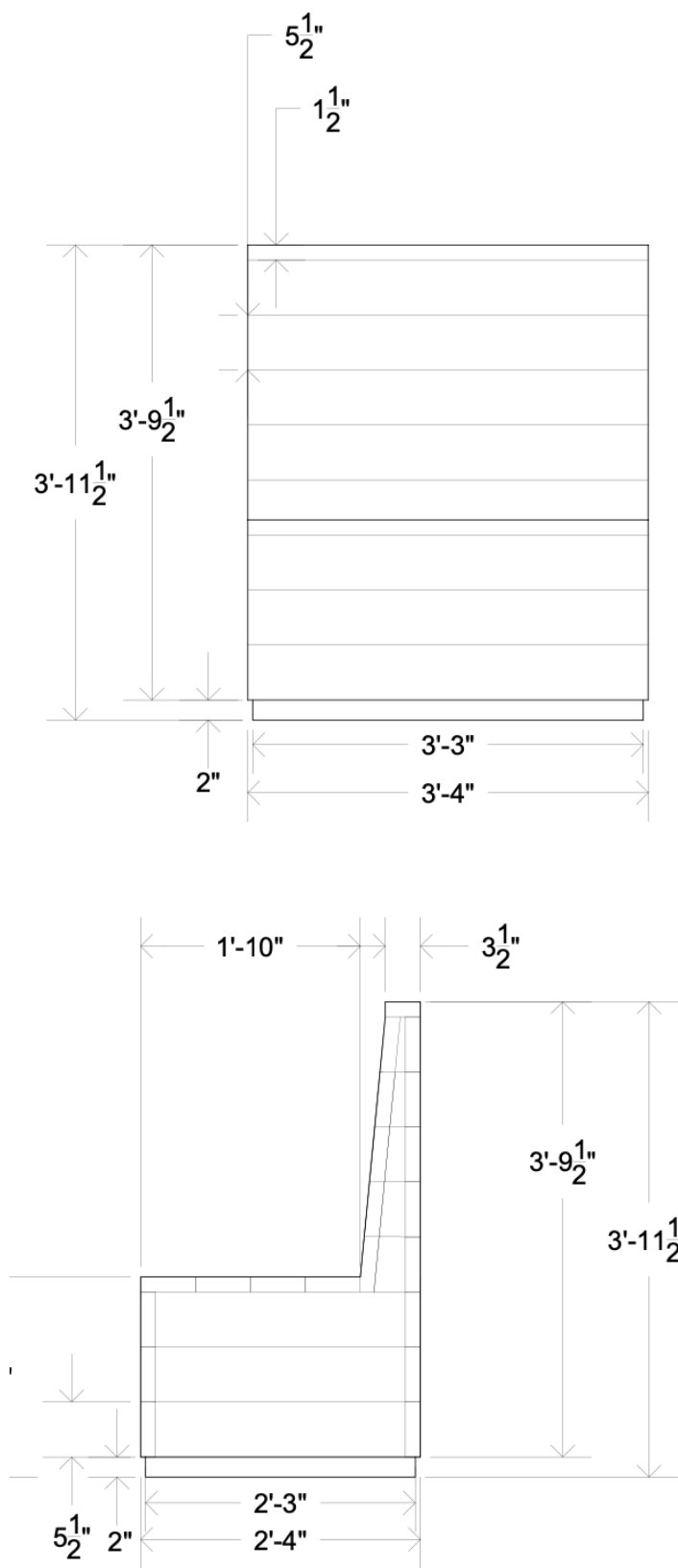
SECTION PLAN

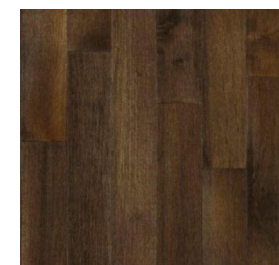
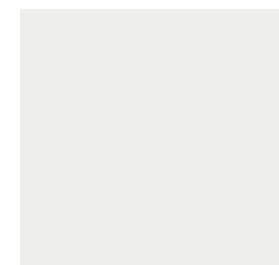


ELEVATION



COMMERCIAL





TOWNHOUSE RENOVATION - 2021 MOOD BOARD

This townhouse renovation was primarily focused on all providing new paint, flooring, lighting, fixtures, and furniture. The owner was a single man, who wanted a finished master bedroom incorporating some of his existing furniture, a guest bedroom, a finished office, and common areas with enough seating for himself and 5 guests.

The owner requested a chic, monochrome look, in a transitional style, with a focus on upholstered finishes and soft materials wherever possible.

TOWNHOUSE RENOVATION FLOOR PLAN

